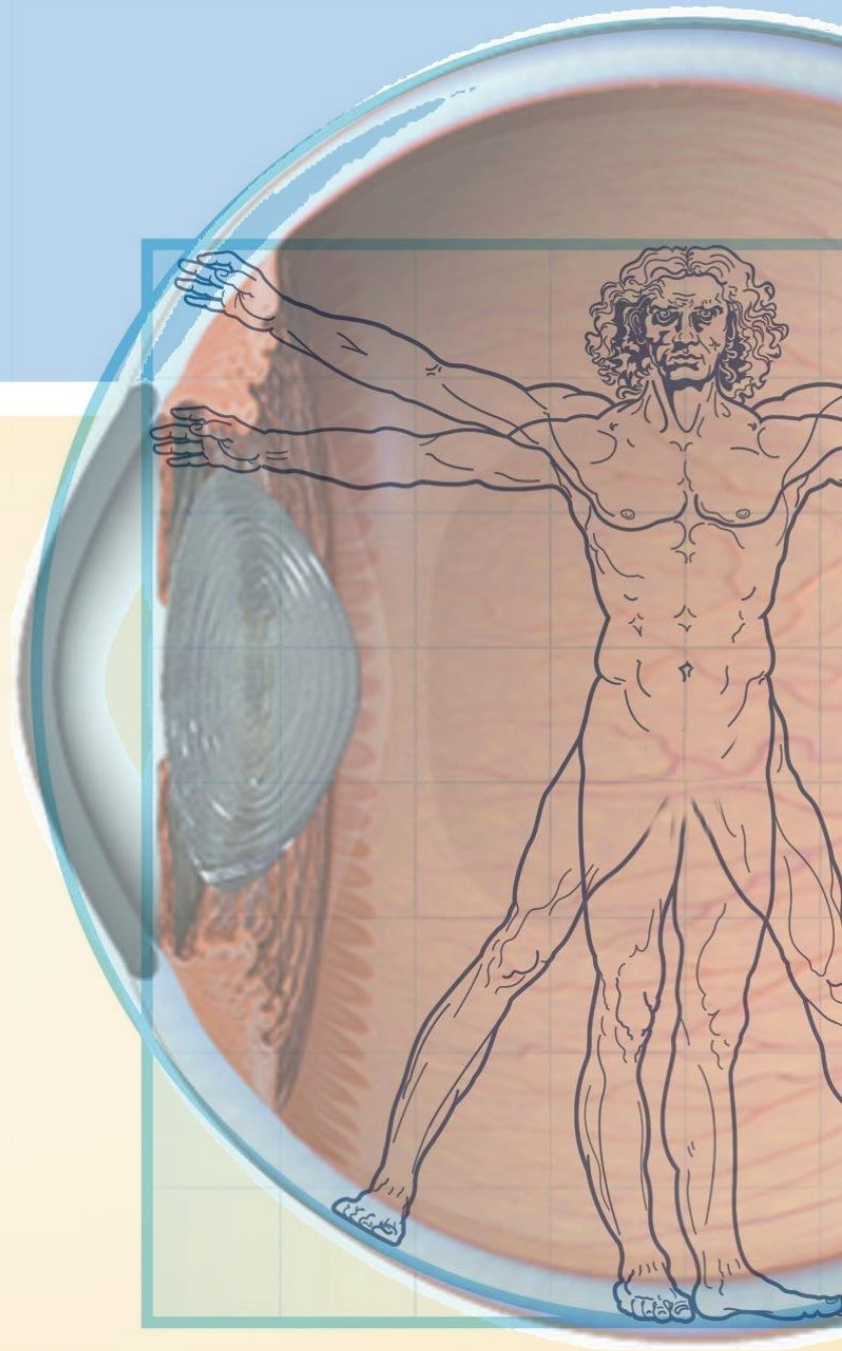




Our Vision Is Vision®

Third Annual
FOCUS ON EYE HEALTH
National Summit

Wednesday
June 18, 2014
National Press Club • Washington, DC





Health Funding in the Dark Age of Austerity

Emily Holubowich, MPP
Senior Vice President, CRD Associates
Executive Director, Coalition for Health Funding

@healthfunding

June 18, 2014



**EXTREME MAKEOVER:
DEFICIT EDITION**



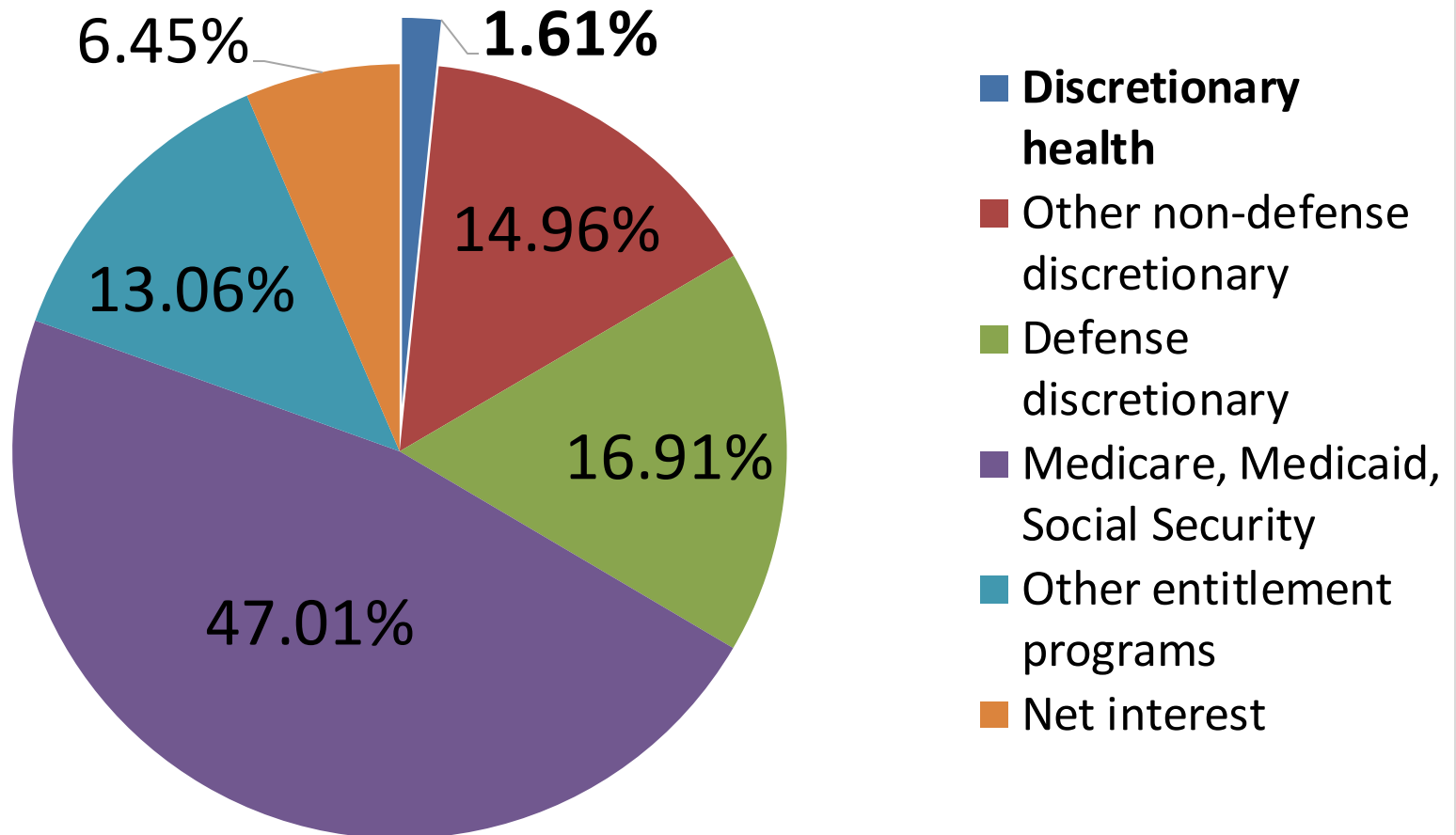


Budget Control Act (Look Ma, No Hands!)

- Enacted August 2011 to avoid national default, reduce deficits over decade
- Cut \$900 billion from discretionary spending starting FY 2012
- Sequestration triggered March 2013
 - Cut additional \$1 trillion between FY 2013 - FY 2021
- Social Security, Pell Grants, Medicaid exempt
- Bipartisan Budget Act enacts short-term changes



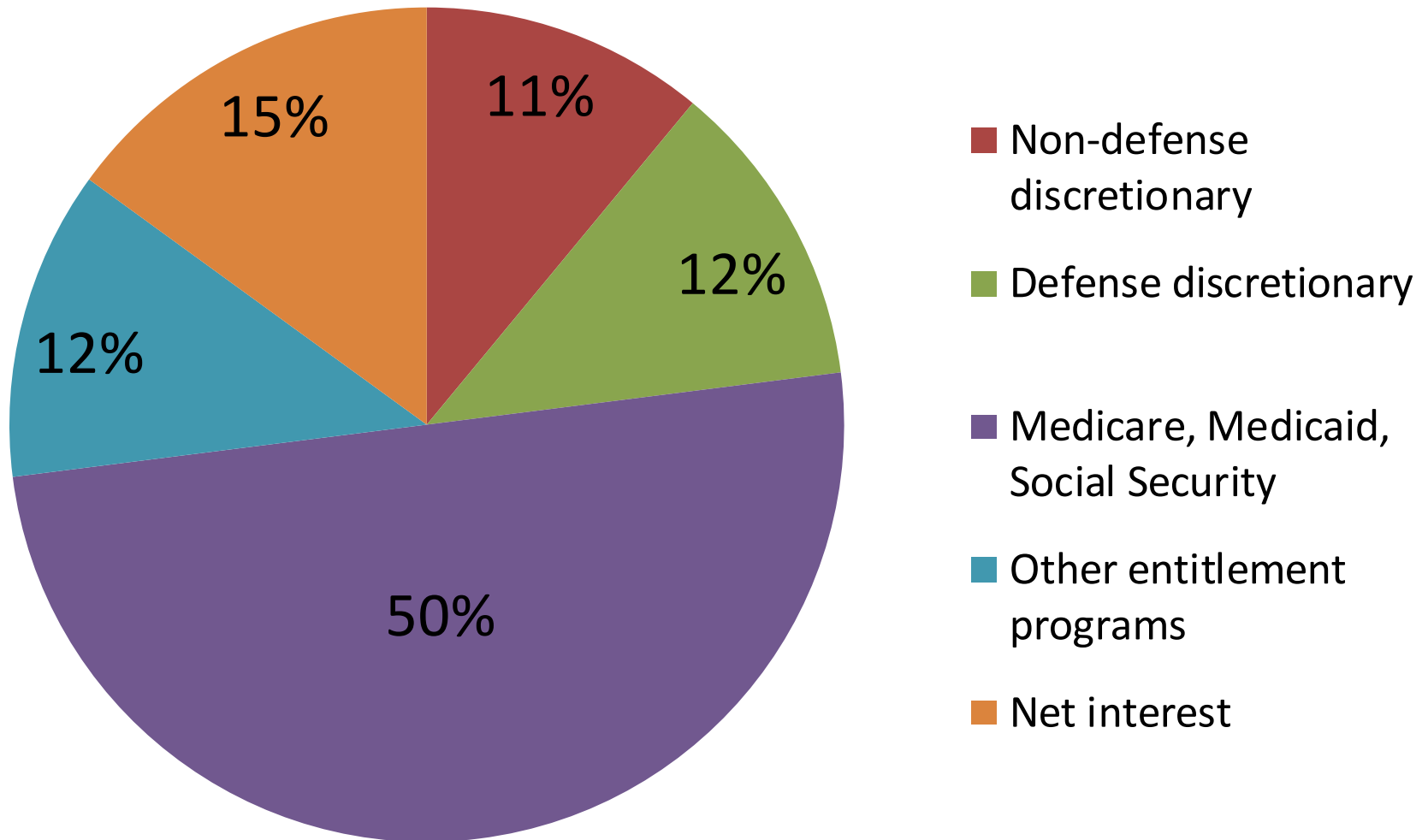
Federal Spending, FY 2014



Source: CBO April 2014 Baseline

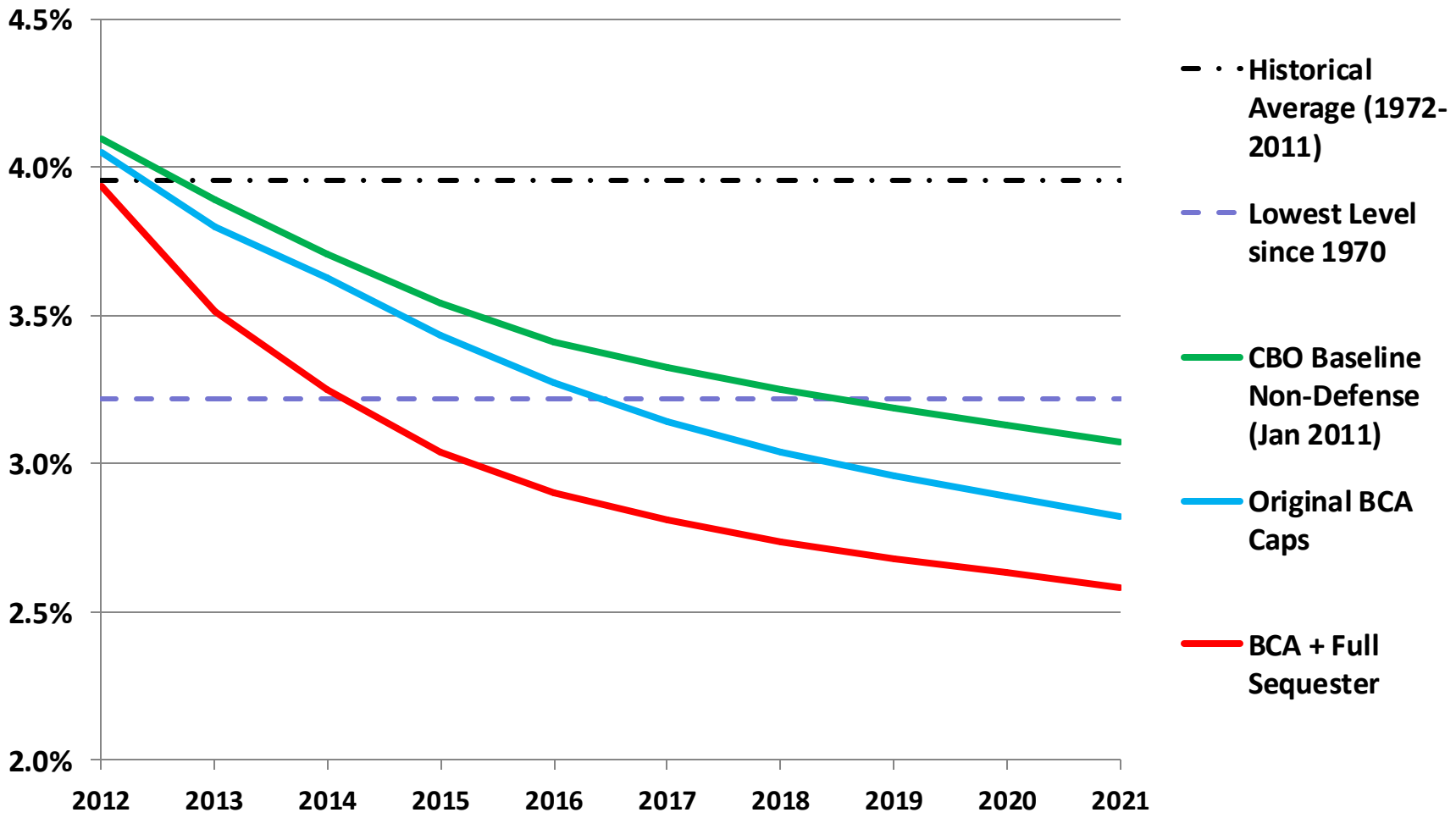


Federal Spending, FY 2022





Nondefense Discretionary Spending at Lowest Levels on Record





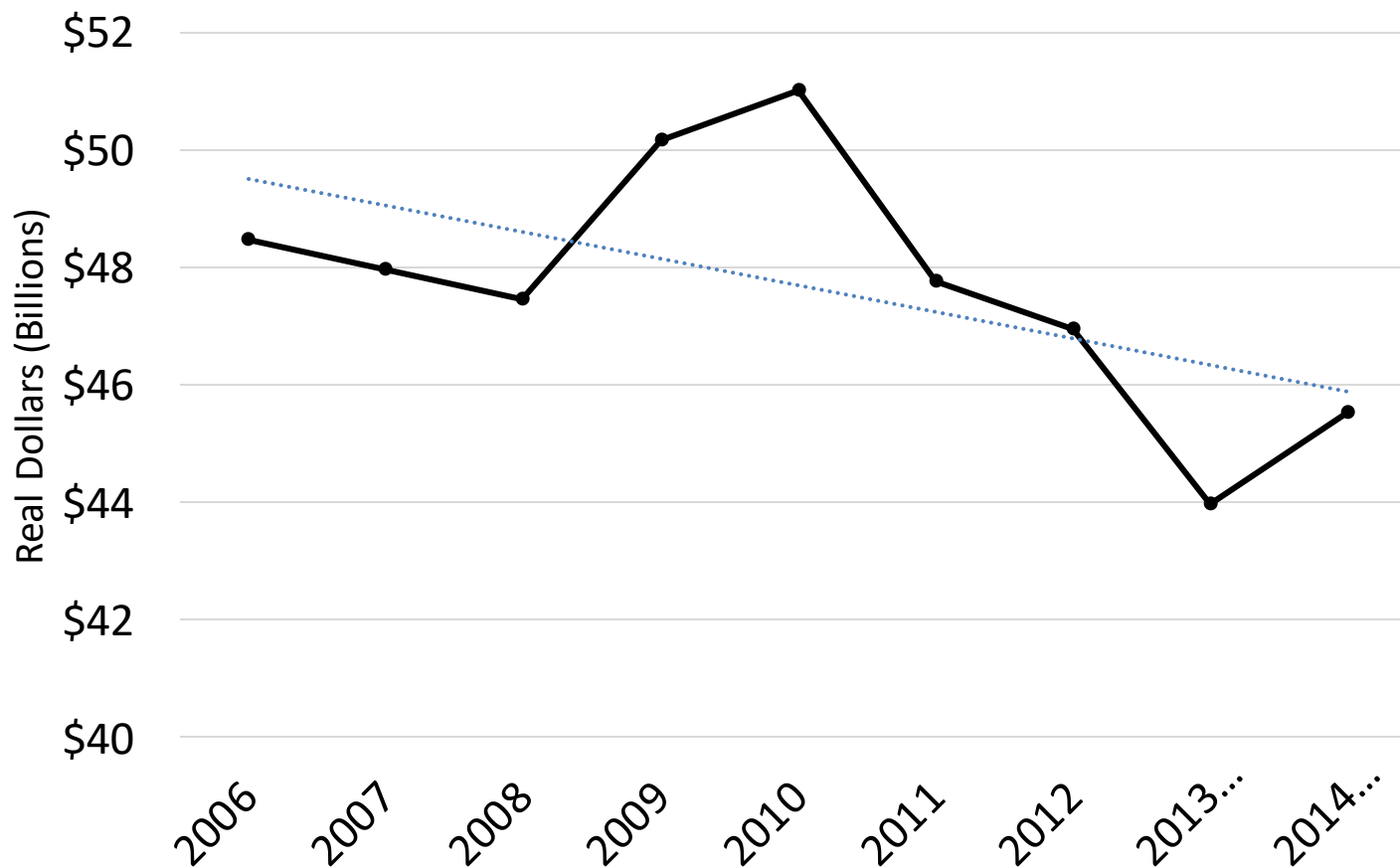
Health in the Crosshairs

- Federal discretionary health cuts 5% to date
 - Wide variation across HHS
- Sequestration in FY 2013 alone...
 - \$2.5 billion cut to discretionary health
 - Not all cuts created equal
 - Some programs eliminated altogether
- Most cuts restored in FY 2014
- FY 2015 level provides no room for growth



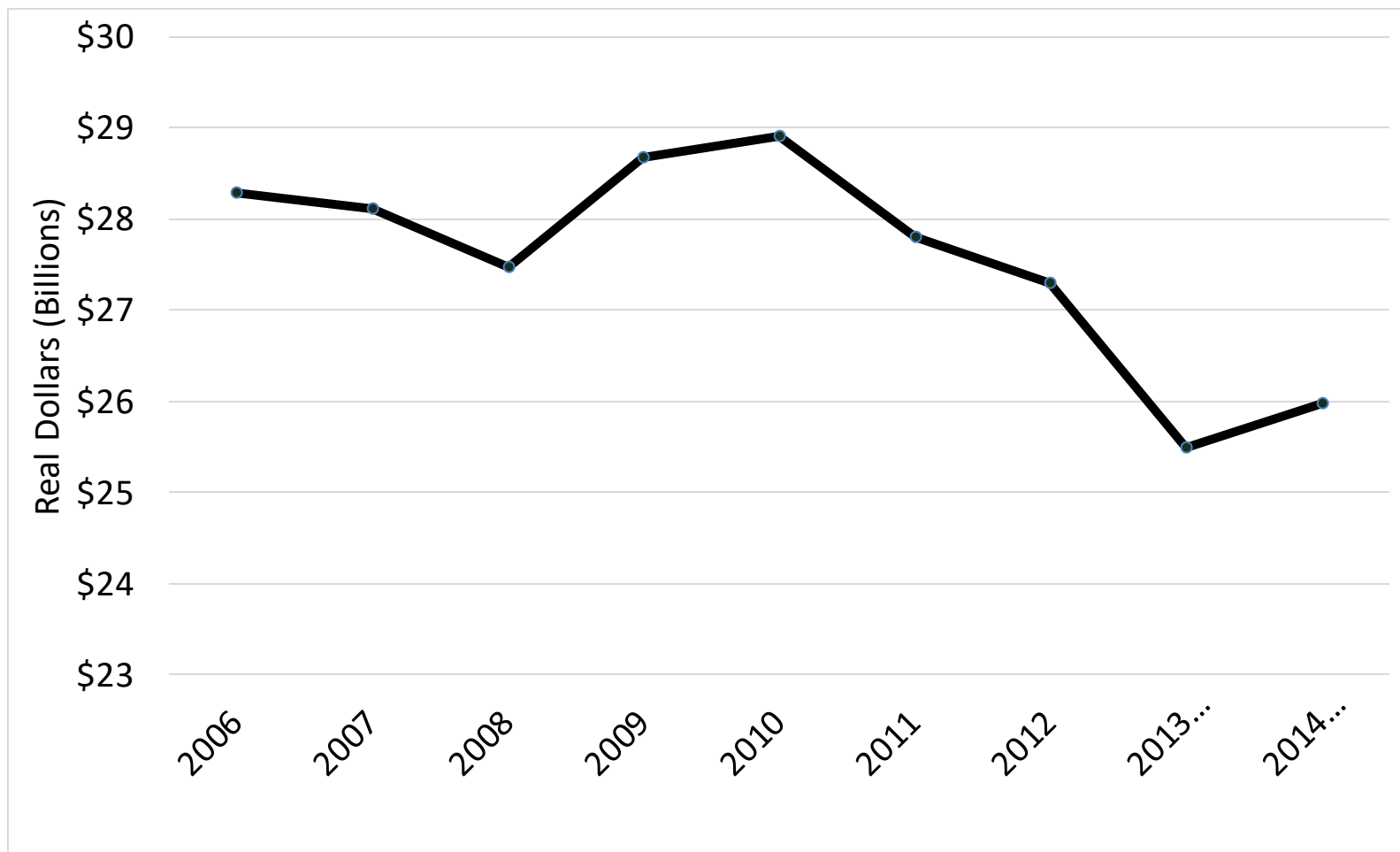
Total Funding for Public Health Agencies

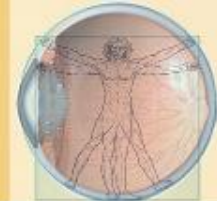
(Adjusted for Inflation)





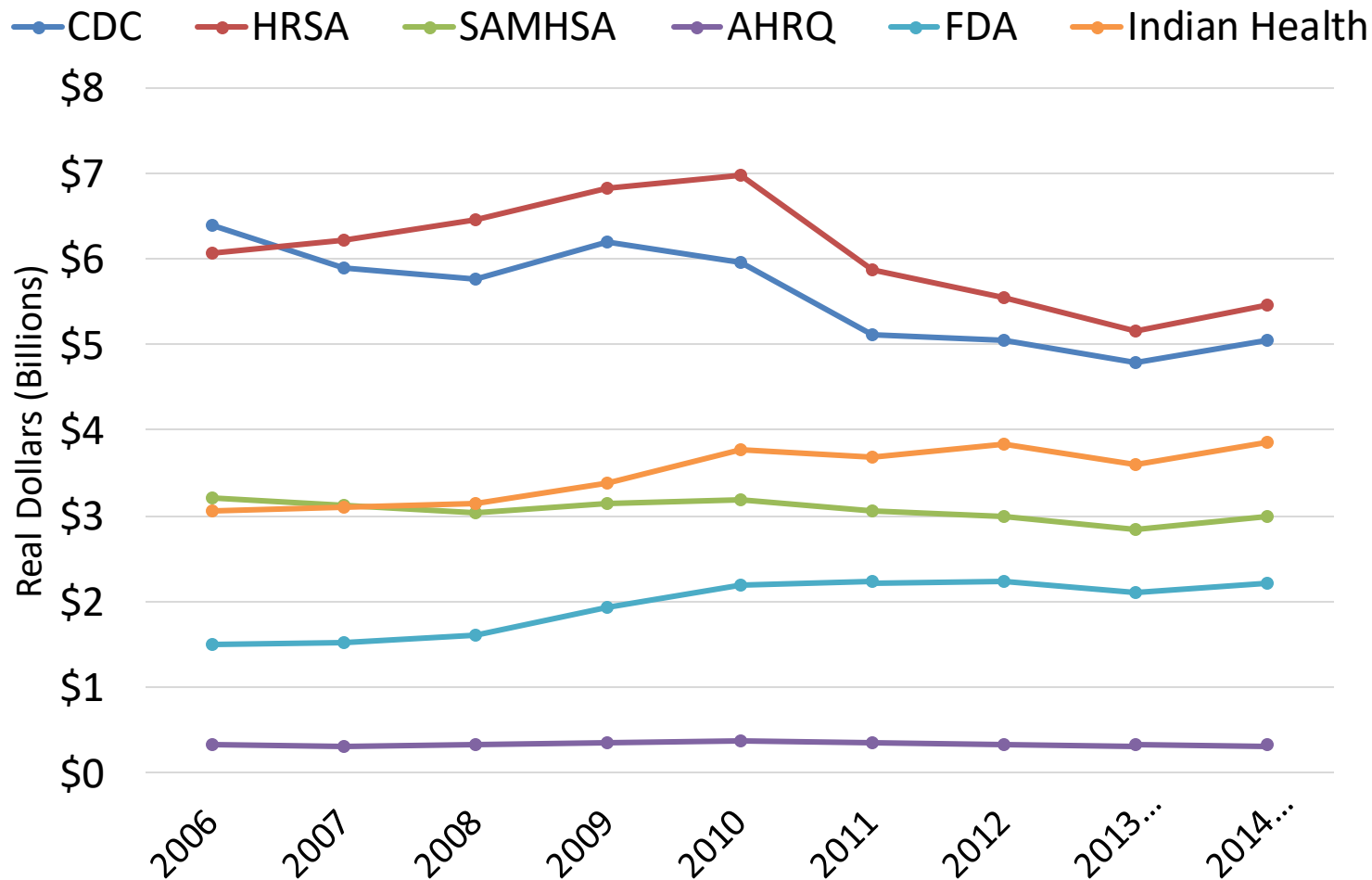
Total Funding for NIH (Adjusted for Inflation)





Funding for Non-NIH Public Health Agencies

(Adjusted for Inflation)





Vision Health Funding (in millions)

Vision Program	FY14	vs. FY08 (nominal)	% vs. FY08 (nominal)	vs. FY08 (real)	% vs. FY08 (real)
CDC Vision Health	\$0.49	-\$1.9	-79.7%	-\$2.15	-\$81.6%
CDC Glaucoma	\$3.2	-\$0.25	-7.2%	-\$0.6	-\$15.8%
CDC Diabetes	\$137.3	+\$74.5	+118.8%	+\$68.2	+98.7%
HRSA Title V	\$623.7	-\$42.3	-6.3%	-\$109.6	-\$14.9%
NIH NEI	\$682	+\$15	+2.2%	-\$52.34	-7.1%



The Lost Decade...?

- The levels are too low
 - Zero sum gain going forward
 - Levels in out years don't keep pace with inflation, population growth
 - Conflicting priorities create additional strain
- Fierce competition for limited resources
 - Must do vs. nice to do
 - Cannibalization of health
- Advocates must work to break the cycle of austerity
 - Focus on impact, both real and opportunity costs



Contact

Emily J. Holubowich, MPP

Senior Vice President

Cavarocchi · Ruscio · Dennis Associates

202.484.1100

eholubowich@dc-crd.com

Follow Me! @healthfunding

